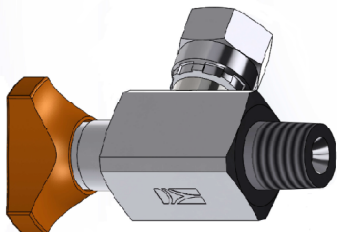


Product
available in:
- Stainless
Steel
- Carbon
Steel



CONTACT US



+39.051.6869070



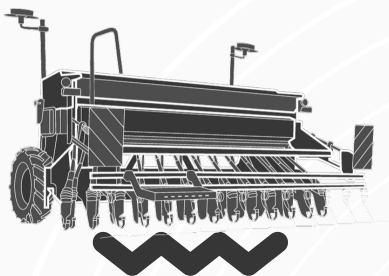
sales@minipress.it



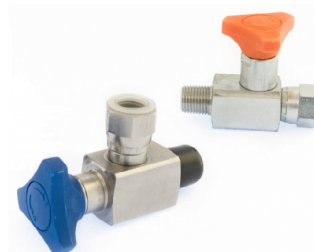
www.minipress.it



Via G. Di Vittorio 1-3, Loc. Crespellano,
40056 Valsamoggia (BO) - Italy



FOR MORE INFORMATION:
CONTACT US OR DOWNLOAD OUR
TECHNICAL CATALOGUE VISITING
OUR WEBSITE.




MINIPRESS
DIAGNOSTIC SYSTEMS

ANTI-SHOCK VALVES FOR GAUGE PROTECTION

PRODUCT GUIDE



COUPLING WITH THE GAUGE

The anti-shock valve has a female connection for 1/4 "BSP analog pressure gauge, a rotating nut, which allows the pressure gauge to be oriented as required. The presence of the OR inside there (standard in NBR material and regularly supplied) prevents the fluid leakage between the pressure gauge and the anti-shock valve. Versions with connection for conical and NPT pressure gauge's thread are also available.



FUNCTION

The anti-shock valves are normally used to protect the pressure gauge.

- Double function that can be activated by turning the handwheel (orange for the carbon steel range, and blue for the stainless steel line):
- Dampen the pressure surge during the opening
 - Isolate the instrument from the system's pressure line

Working pressure: up to 400 bar.



”

Install an anti-shock valve coupled with a pressure gauge, in the points of your hydraulic system that need constant pressure control.

”

To check the pressure, alternatively, mount a threaded valve (test coupling) on the system, and connect the pressure gauge through a flexible micro hose or an adapter.

