



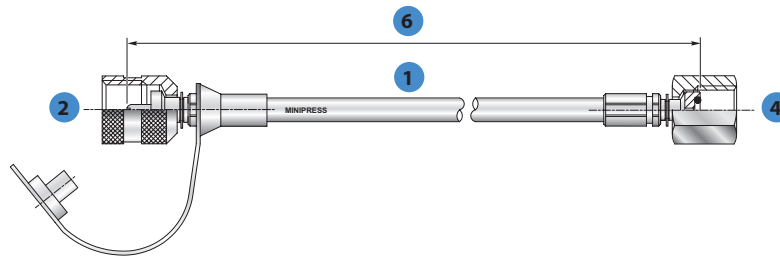
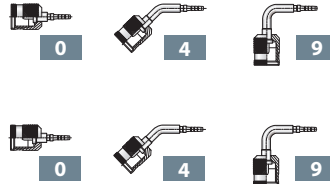
Come ordinare

How to order

Esempio per l'ordine
Ordering example

Codice ordine / Order code					
RD2	31TN	0	3614	0	L1500
1	2	3	4	5	6

- 1 Tubo / Hose type
- 2 Tipo raccordo / Fitting type
- 3 Curvatura del raccordo
Elbow fitting angle
- 4 Tipo raccordo / Fitting type
- 5 Curvatura del raccordo
Elbow fitting angle
- 6 Lung. tubo / Hose length



Normativa di riferimento

Reference regulations

Riferimento tubo / Hose code

RD2 - RD4

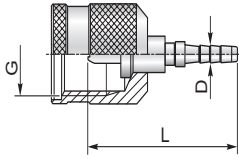
Adatto per passaggio di oli minerali, oli idraulici tipo ASTM 3, benzine. Resistenza chimica all'olio per freni (tipo DOT 4)
For mineral and hydraulic oil, type ASTM 3. fuel. Brake systems oil (type DOT 4).

		RD2	RD4
Diam esterno Outside diameter	[mm]	5	8
Diametro interno Inside diameter	[mm]	2	4
Pressione max. di lavoro Max. working pressure	[bar]	630	500
Pressione minima di scoppio Min. bursting pressure	[bar]	1890	1500
Raggio minimo Min. bending radius	[mm]	20	35
Temperature di esercizio Working temperature	°C	-40...+100	-40...+100
Materiale anima Core material	Poliestere termoplastico Thermoplastic polyester		
Materiale treccia Braid material	Fibra aramidica Aramidic fibre		
Ricopertura est. Cover material	Poliuretano antiabrasione Antiabrasion polyurethane		



Raccordo connessione avvitabile per miniprese

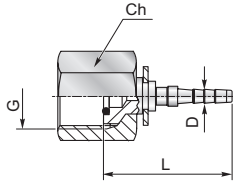
Test coupling threaded female fitting



Tubo / Hose	G	L	Ch	D	Codice/Ref.
RD2	M16x2	32.5	19	2.0	31TNVAI0
RD4	M16x2	36.5	19	4.0	31TNVAI4

Raccordo connessione avvitabile per manometro

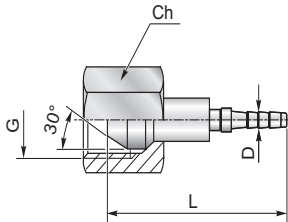
Gauges threaded fitting



Tubo / Hose	G	L	Ch	D	Codice/Ref.
RD2	G 1/4	26	19	2.0	3614VAI0
	G 1/2	33.5	27	2.0	3612VAI0

Raccordo femmina girevole connessione cono 60° tipo DKR

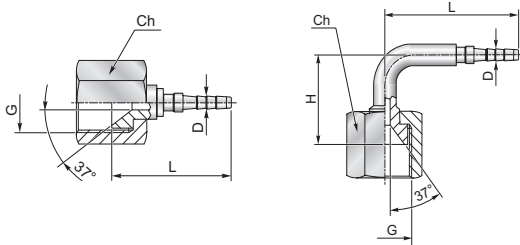
Swivel female fitting 60° cone connection type DKR



Tubo / Hose	G	L	Ch	D	Codice/Ref.
RD2	G 1/4	26	17	2.0	3814AI00
RD4	G 1/4	32.5	17	4.0	3814AI04

Raccordo femmina girevole connessione JIC 74° tipo DKJ

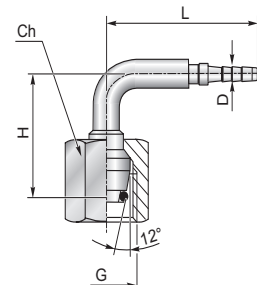
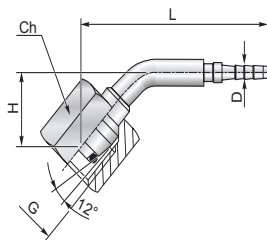
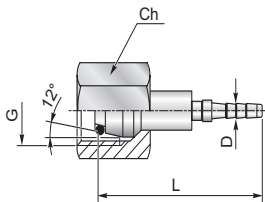
Swivel female fitting JIC 74° connection type DKJ



Tubo / Hose	G	L	Ch	D	Codice/Ref.
RD2	7/16-20 UNF	25	14	2.0	3916AI00
	3/8-24 UNF	24.5	12	2.0	3938JAI0
RD4	7/16-20 UNF	28	14	4.0	3916AI04
	7/16-20 UNF	23	43,5	4.0	3916AI94

Raccordo femmina girevole connessione cono 24° tipo DKOL

Swivel female fitting 24° cone connection type DKOL



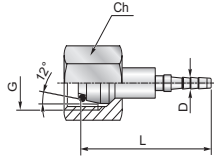
Tubo / Hose	Ø	G	L	Ch	D	Codice/Ref.
RD2	6	M12x1.5	31.6	14	2.0	35R0VAI0
	8	M14x1.5	31.6	17	2.0	35R2VAI0
RD4	6	M12x1.5	35.5	14	4.0	35R0VAI4

Tubo / Hose	Ø	G	H	L	Ch	D	Codice/Ref.
45°	6	M12x1.5	15	50	14	4.0	35R0VAI44
90°			25	38	14	4.0	35R0VAI94



Raccordo femmina girevole connessione cono 24° tipo DKOS

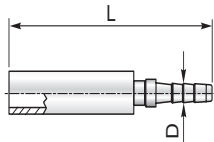
Swivel female fitting 24° cone connection type DKOS



Tubo / Hose	Ø	G	L	Ch	D	Codice/Ref.
RD2	8	M16X1.5	31.6	19	2.0	35R3VAI0

Raccordi a codolo liscio

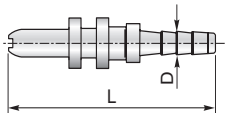
Standpipe fitting



Tubo / Hose	Ø	L	D	Codice/Ref.
RD2	6	36	2.0	34R0AI00
	8	36	2.0	34R3AI00

Innesto per minipresa a baionetta

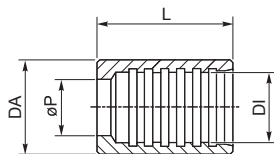
Plug-in connection



Tubo / Hose	L	D	Codice/Ref.
RD2	27	2.0	33TDAI00

Ghiera a pressare

Ferrule



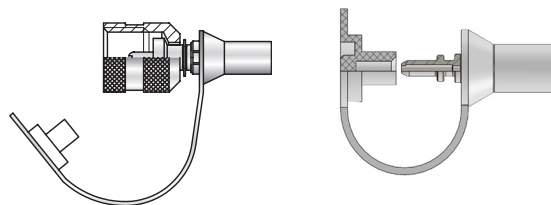
DA	DI	L	ØP	Ø Press	PN [bar]	Codice/Ref.
8.0	5.1	15	4.5	7.1	600	30BT2AI0
12	9.2	17	6.5	10.2	600	30BT4AI1

Ø Press = Diametro di pressatura / Crimping diameters

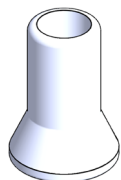


Cappuccio parapolvere in plastica per raccordi RD2 e RD4 F16X2, 16X1.5, S12,65X1,65 e baionetta

Anti-dust plastic cap suitable for RD2 and RD4 F16X2, 16X1.5, S12,65X1,65 and plug-in fittings

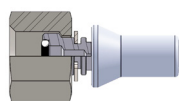


Codice/Ref.
32CP0000
32CP0004



Parapolvere protettivo per boccola in plastica per raccordi RD2 e RD4

Ferrules anti-dust cap for RD2 and RD4 fittings



Codice/Ref.
32CS0000
32CS0004

I tubi capillari RD2 e RD4 raccordati sono sempre dotati di parapolvere 32CP000X e/o 32CS000X. In caso di acquisto di raccordi sciolti, 32CP000X e/o 32CS000X sono inclusi nel codice del raccordo.
Fitted micro hoses RD2 and RD4 are always complete with anti-dust caps 32CP000X and/or 32CS000X. In case of purchase of loose fittings, 32CP000X and/or 32CS000X are included in fitting part number.